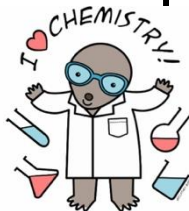


Welcome to Physical Science



Mrs. Voss

Room S 304 770-387-5543

cvoss@cartersvilleschools.org



Grading

Your **Course Grade** will be calculated as follows:

- | | |
|---------------------------------|------------|
| 1. Summative Assessments | 60% |
| 2. Formative Assessments | 40% |

Your **FINAL Grade** will be calculated as follows:

- | | |
|-----------------------------------|------------|
| 3. Course Grade | 90% |
| 4. Final Exam (Cumulative) | 10% |

Communication

- Parents & Students: I will send mass emails/reminders through Blackboard.
- Parents: The best way to contact me is through my school email at cvoss@cartersvilleschools.org
- Students: The best way to contact me is to message me through Schoology.
- Students: The daily work will be posted weekly in the Padlet posted in the Agendas folder in Schoology.

Required Materials

- ✓ Composition Notebook (to be left in class and used as a journal) – this will be a grade
- ✓ 3-ring binders (recommend 1 ½ or 2-inch binder; dedicated to this class – preferably 2-inch binder)
 - There will be a notebook grade at the end of each unit
- ✓ All materials will be needed to study for the midterm/final
- ✓ 15 divider tabs
- ✓ Pencils/Pens- blue or black ink only
- ✓ Notebook paper
- ✓ Calculator (no phones or tablets)

Practice Work / Homework

Practice work / homework is required in order to understand the information and do well on the tests. Homework is whatever assignments you were not able to complete in class. It is preferable that students use class time efficiently and work on the practice work in class while the teacher is present to answer questions. Extra time may be given if discussed with me prior to the due date of the assignment.

Late Work: If the assignment is late, it will be -10 points each day. After 5 days, the most an assignment can receive is a 50. The assignment will not be taken once the unit is completed.

NOTE: *The purpose of homework is to help students understand the material and prepare for the tests.* Students should complete the work assigned whether or not it is taken for a grade.

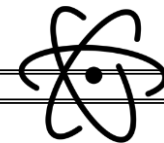
Studying is considered homework!

The daily agenda, assignments, PowerPoints, and important dates will be posted on Schoology in my Padlet. ALL students have access to & can utilize this resource every day. There is also an “extra resources” section for extra assistance.

Check Schoology when absent from

✓ **15 divider tabs – Labeled as:**

- | | |
|-----------------------------------|----------------------------------|
| 1 st – Agendas | 9 th – Elec/Mag |
| 2 nd – Final Review | 10 th – Waves |
| 3 rd – LP Project | 11 th – Energy |
| 4 th – Nuclear Chem | 12 th – Work/Pow/Mach |
| 5 th – Solutions | 13 th – Forces |
| 6 th – Chem Bonds/Rxns | 14 th – Motion |
| 7 th – Atoms/PT | 15 th – Intro |
| 8 th – Matter | |



Learning Objectives

SPS1. Obtain, evaluate and communicate information from the Periodic Table to explain the relative properties of elements based on patterns of atomic structure.

SPS2. Obtain, evaluate and communicate information to explain how atoms bond to form stable compounds.

SPS3. Obtain, evaluate and communicate information to support the Law of Conservation of Matter.

SPS4. Obtain, evaluate and communicate information to explain the changes in nuclear structure as a result of fission, fusion and radioactive decay.

SPS5. Obtain, evaluate and communicate information to compare and contrast the phases of matter as they relate to atomic and molecular motion.

SPS6. Obtain, evaluate and communicate information to explain the properties of solutions.

SPS7. Obtain, evaluate and communicate information to explain transformations and flow of energy within a system.

SPS8. Obtain, evaluate and communicate information to explain the relationships among force, mass and motion.

SPS9. Obtain, evaluate and communicate information to explain the properties of waves.

SPS10. Obtain, evaluate and communicate information to explain the properties of and relationships between electricity and magnetism.



Behavior Expectations

I have high expectations for all students. I expect students to achieve academically to their fullest potential. I also expect students to contribute in a **respectful** and **positive** manner to the classroom.

- You must bring your supplies (notebook, calculator, pen/pencil) every day. You will not be allowed to leave class to retrieve them. Failure to come to class prepared will negatively impact your daily grade.
- **NO CELL PHONES out at any time. Cell phones must be turned off and in cell phone holder on the wall. Visible cell phones will be confiscated and turned in to the office. No exceptions!**
- No food or drinks, except water with a cap.
- STARTING CLASS:
 - Retrieve your journal and begin working on that day's warm up. You must be in your seat working on your journal assignment when the bell rings. *REMINDER: The journal is a test grade.*
- DURING CLASS:
 - Keep aisles clear of backpacks and other belongings.
 - Remain in your seat at all times. If you need to get up for any reason, please raise your hand and ask to do so.
 - You may NOT work on material for another class while in physical science class. If you are found working on an assignment for another class, that assignment will be confiscated and turned in to that teacher by me.
- ENDING CLASS:
 - I will let you pack up two minutes before the bell rings. NO PACKING UP before this time.
 - You may get your phone at this time but STAND BY YOUR SEAT until the bell rings. No standing by the door.

Five bathroom/hall passes will be issued to each student per semester. Unused passes may be turned in at the end of the semester for extra credit.

Labs

- Labs are an important part of the class and are a great way to learn the concepts in a hands-on manner. For student safety, some chemistry labs may require that a dress code be followed in the lab (no shorts/skirts/sandals). In the chemistry lab, safety goggles must be worn at all times. Students should remain at their lab bench for the duration of the experiment and not wander around to other tables. To work on the lab, you must wear a mask.
- Failure to follow instructions, improper attire or other behavioral issues will mean that you cannot participate in the lab. You will then need to make up the lab for partial credit.
- For lab assignments, all concepts and definitions should come from your notes, not from the internet. Lab procedures are based on concepts we are studying in class. Copying from the internet is plagiarism and is considered cheating. Answers to post-lab questions should be *YOUR OWN* words. Just because you are collecting data as a group does not mean you are turning in a group assignment. **Every student should turn in original, individual work.** If two students turn in a lab assignment with the same wording, neither will receive credit.
- **Failure to turn in a lab assignment will result in a ZERO. Late assignments are not accepted.**

Tardies

Students are not allowed to enter the room after the bell without a tardy pass.

Please note: if you are late to class, must bring a tardy pass from the office.

Academic Integrity

This class has zero tolerance for cheating. Academic dishonesty includes, but is not limited to cheating, plagiarism, and/or copying ***This includes copying from the internet.*** Any such instances will result in a grade of **zero** for the assignment and a disciplinary write up. This policy includes, but is not limited to tests/quizzes., classwork, homework, and labs. **IMPORTANT:** both the student copying and the one letting their work be copied will be penalized.

AI Policy:

- AI programs should complement learning, not replace it.
- All work generated with the assistance of AI programs must be original. Plagiarism, even if AI-generated, is not acceptable.
- AI programs are tools for assistance. They are not a substitute for your own critical thinking and understanding of the subject matter.
- You are not to use AI for assignments except for research purposes. If you use AI it **MUST** be complemented by independent fact-checking. Any assignment completed with or without AI is subject to a verbal review with the teacher.

Makeup Work

- Daily agenda & assignments will be posted in Schoology.
- If you miss class, it is **YOUR** responsibility to get necessary make-up work. Check the Padlet in Schoology!
- If you miss a test, make an appointment with me for a make-up test within 5 days of the absence.
- If you miss a lab, make an appointment with me for a make-up lab within 5 days of the absence.
- **IMPORTANT NOTE: Make-up work:**
Summative: Must contact me within 5 days to make up
Formative: -10 pts for each day late, down to 50%

Extra Credit

Please note that there is no "Extra Credit" for failure to complete routine assignments or scoring poorly on exams. Do your best on all items attempted and get help if you do not understand a concept. Don't wait until right before an exam.